

# \$549,900 - 85 Pondside Crescent, Blackfalds

MLS® #A2211500

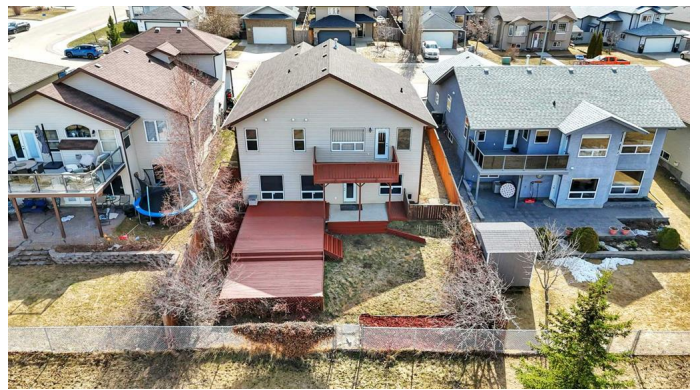
**\$549,900**

4 Bedroom, 3.00 Bathroom, 1,398 sqft

Residential on 0.14 Acres

Panorama Estates, Blackfalds, Alberta

Introducing your next home in the family friendly community of Panorama Estates! This fully finished walkout bungalow backs directly onto the pond and greenspace at Centennial Park... easily one of the BEST views in town. With over 2,400 sq. ft. of fully developed space, this home offers 4 bedrooms, a spacious 5-pc ensuite, two 4-pc bathrooms, and a layout that works wonderfully for families or anyone needing extra space to work from home or entertain. The main floor is bright and open with vaulted ceilings, huge windows, and a functional kitchen featuring stainless steel appliances, a raised breakfast bar, corner pantry, and a new faucet. Fresh paint and brand new carpet give the space a fresh, updated feel throughout. Upstairs, you'll find three bedrooms including a generous primary suite with a 5-piece ensuite and 6 ft tub, plus another full 4-piece bathroom. Downstairs, the fully finished WALKOUT basement includes a large rec room with a wet bar, a separate games/media area, an additional bedroom, full 4-piece bath, and a flex space! Whether you need space for guests, teens, or a home gym, this setup checks all the boxes. Outside, this inviting home offers a fully landscaped yard with lilac, cherry, and plum trees, fenced dog run, and massive two-tier deck overlooking the pond. This is the ultimate summer set up for entertaining friends and family. There's even a man gate for quick access to the greenspace trail! Additional perks include a brand new roof and recent professional



furnace and duct cleaning. Located just minutes from Red Deer with quick access to Highway 2, this is a rare opportunity to own in one of Blackfalds' most scenic and peaceful locations.

Built in 2006

### **Essential Information**

|                |             |
|----------------|-------------|
| MLS® #         | A2211500    |
| Price          | \$549,900   |
| Bedrooms       | 4           |
| Bathrooms      | 3.00        |
| Full Baths     | 3           |
| Square Footage | 1,398       |
| Acres          | 0.14        |
| Year Built     | 2006        |
| Type           | Residential |
| Sub-Type       | Detached    |
| Style          | Bungalow    |
| Status         | Active      |

### **Community Information**

|             |                      |
|-------------|----------------------|
| Address     | 85 Pondside Crescent |
| Subdivision | Panorama Estates     |
| City        | Blackfalds           |
| County      | Lacombe County       |
| Province    | Alberta              |
| Postal Code | T4M 0G3              |

### **Amenities**

|                |                        |
|----------------|------------------------|
| Parking Spaces | 2                      |
| Parking        | Double Garage Attached |
| # of Garages   | 2                      |

### **Interior**

|                   |  |
|-------------------|--|
| Interior Features | Breakfast Bar, Closet Organizers, Double Vanity, Laminate Counters, Pantry, Vaulted Ceiling(s), Walk-In Closet(s), Wet Bar |
| Appliances        | Dishwasher, Dryer, Microwave Hood Fan, Refrigerator, Washer, Range   |

|              |                          |
|--------------|--------------------------|
| Heating      | In Floor, Forced Air     |
| Cooling      | None                     |
| Has Basement | Yes                      |
| Basement     | Finished, Full, Walk-Out |

## Exterior

|                   |   |
|-------------------|---|
| Exterior Features | Dog Run   |
| Lot Description   | Back Yard, Backs on to Park/Green Space, Dog Run Fenced In, Fruit Trees/Shrub(s), Landscaped, No Neighbours Behind, Creek/River/Stream/Pond |
| Roof              | Asphalt Shingle   |
| Construction      | Vinyl Siding, Wood Frame  |
| Foundation        | Poured Concrete   |

## Additional Information

|                |                  |
|----------------|------------------|
| Date Listed    | April 14th, 2025 |
| Days on Market | 17               |
| Zoning         | R1-M             |

## Listing Details

|                |             |
|----------------|-------------|
| Listing Office | Real Broker |
|----------------|-------------|

Data is supplied by Pillar 9â„¢ MLSÂ® System. Pillar 9â„¢ is the owner of the copyright in its MLSÂ® System. Data is deemed reliable but is not guaranteed accurate by Pillar 9â„¢. The trademarks MLSÂ®, Multiple Listing ServiceÂ® and the associated logos are owned by The Canadian Real Estate Association (CREA) and identify the quality of services provided by real estate professionals who are members of CREA. Used under license.