

\$528,555 - 1602, 188 15 Avenue Sw, Calgary

MLS® #A2217930

\$528,555

2 Bedroom, 2.00 Bathroom, 1,143 sqft
Residential on 0.00 Acres

Beltline, Calgary, Alberta

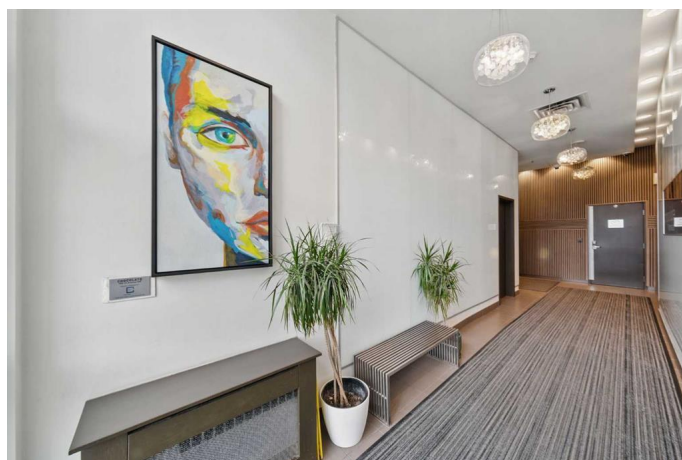
Stunning downtown skyline views! This ultra modern 2 bedroom 2 bathroom property features a wide open concept perfect for entertaining. Floor to ceiling windows allow full views of the beautiful downtown as well as Calgary stampede grounds. This concrete building has fantastic walkability to 4th St shops, restaurants, is a short stroll to downtown and has great access to everything your lifestyle needs. There's also titled, heated underground parking, gas BBQ hook up and AC to keep you cool in the summer, call today to view!

Built in 2006

Essential Information

MLS® #	A2217930
Price	\$528,555
Bedrooms	2
Bathrooms	2.00
Full Baths	2
Square Footage	1,143
Acres	0.00
Year Built	2006
Type	Residential
Sub-Type	Apartment
Style	Single Level Unit
Status	Active

Community Information



Address	1602, 188 15 Avenue Sw
Subdivision	Beltline
City	Calgary
County	Calgary
Province	Alberta
Postal Code	t2r1s4

Amenities

Amenities	Elevator(s), Parking, Snow Removal, Trash
Parking Spaces	1
Parking	Heated Garage, Secured, Underground

Interior

Interior Features	No Animal Home, No Smoking Home, Storage
Appliances	Electric Range, Garage Control(s), Microwave Hood Fan, Refrigerator, Washer/Dryer Stacked, Window Coverings
Heating	Baseboard, Hot Water
Cooling	Central Air
# of Stories	20

Exterior

Exterior Features	Balcony
Construction	Concrete

Additional Information

Date Listed	June 5th, 2025
Days on Market	15
Zoning	CC-COR

Listing Details

Listing Office	MaxWell Canyon Creek
----------------	----------------------

Data is supplied by Pillar 9â„¢ MLSÂ® System. Pillar 9â„¢ is the owner of the copyright in its MLSÂ® System. Data is deemed reliable but is not guaranteed accurate by Pillar 9â„¢. The trademarks MLSÂ®, Multiple Listing ServiceÂ® and the associated logos are owned by The Canadian Real Estate Association (CREA) and identify the quality of services provided by real estate professionals who are members of CREA. Used under license.